



King Henrys Reach, Manbre Road,  
Hammersmith, W6

£4,500 Per Month,

NAPIER WATT

T: 0207 935 0011  
E: [enquiries@napierwatt.co.uk](mailto:enquiries@napierwatt.co.uk)  
W: [napierwatt.co.uk](http://napierwatt.co.uk)

35 Berkeley Square, Mayfair, London, W1J 5BF







## Description

A wonderfully bright and spacious three double bedroom property with a west-facing balcony overlooking the River Thames and secure underground parking. Situated within a quiet gated development with a 24-hour concierge and very close to Hammersmith Station, as well as all the amenities of the Fulham Palace Road. The property comprises three double bedrooms with large built in storage, three en-suite bathrooms, guest cloakroom, modern kitchen with integrated appliances, large living and dining room, west facing balcony and a large hallway with additional storage.

Available, unfurnished.

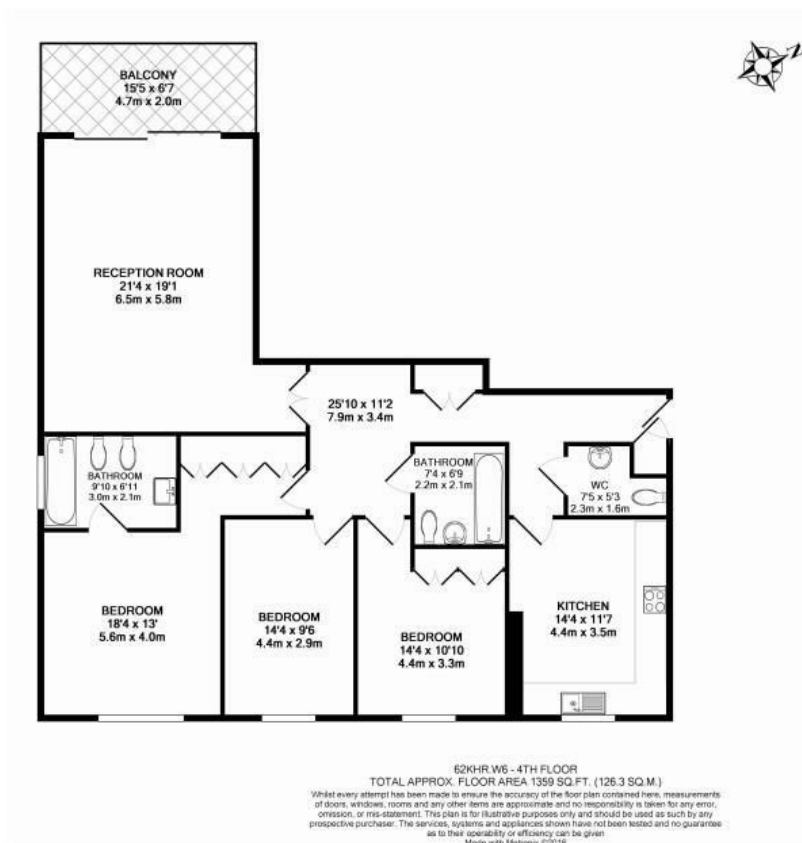
3 Bedrooms : En Suite Bathroom : En Suite Shower Room : Guest WC : Kitchen : Balcony : 24-Hour Concierge : Underground Parking : EPC Rating C

## Key Features

- 24HR PORTER
- STUNNING RIVER VIEWS
- LIFTS
- SECURE PARKING
- BALCONY

## Terms

Fees & Charges: Tenancies exceeding £100,000 Per annum £480 inc VAT, Tenancies where a company is a tenant £480 Inc VAT.



IMPORTANT: We would inform prospective purchasers that these sales particulars have been prepared as a general guide only. A detailed survey has not been carried out, nor the services, appliances and fittings tested. Room sizes should not be relied upon for furnishing purposes and are approximate. If floor plans are included, they are for guidance only and illustration purposes only and may not be to scale. If there are any important matters likely to affect your decision to buy, please contact us before viewing the property.